



SAXON SHORE
— ESTATE AGENTS —



2, Suttons Cottages Perry Wood, Faversham, Kent ME13 9RY Offers in excess of £299,995

Introducing this charming, mid terrace, two bedroom cottage at Perry Wood within the popular village of Selling, near Faversham.

Accommodation spans across two floors and comprises a cosy lounge with a wood burning stove and a kitchen/diner with original features, a butler sink and access to the back garden to the ground floor.

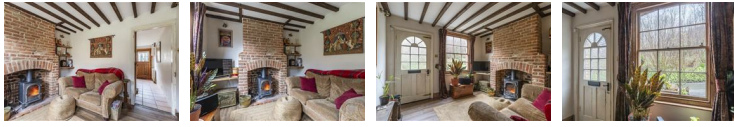
Upstairs on the first floor are two good sized bedrooms and a shower room.

Outside to the rear is a garden with a workshop and a footpath leading to a further Secret Garden.

Don't miss your chance to make this house, your new home. Contact us to arrange a viewing!

Lounge

10'11" x 9'10" (3.35 x 3)



Kitchen/Diner

10'11" x 11'1" (3.35 x 3.40)



Landing



Bedroom 1

10'11" x 9'10" (3.35 x 3)



Bedroom 2

10'11" x 7'8" (3.35 x 2.35)



Shower Room

7'2" x 3'3" inc 6'2" (2.19 x 1 inc 1.90)



Garden

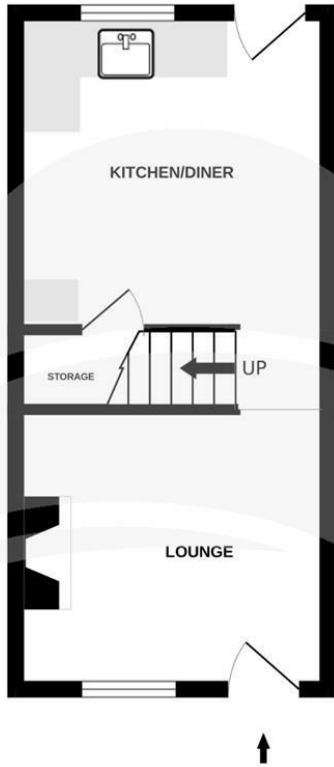


Studio

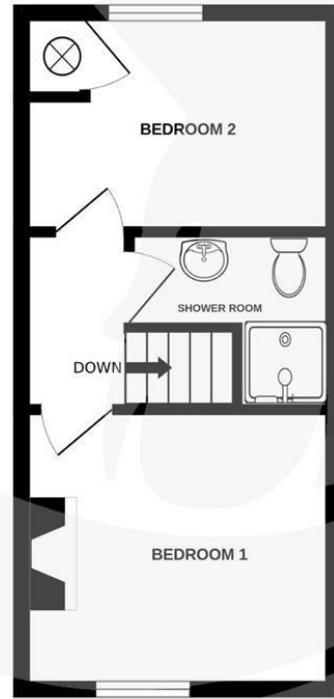
9'10" x 18'0" (3 x 5.5)



GROUND FLOOR
23.6 sq.m. (254 sq.ft.) approx.



1ST FLOOR
23.6 sq.m. (254 sq.ft.) approx.



TOTAL FLOOR AREA: 47.3 sq.m. (509 sq.ft.) approx.

Whilst every attempt has been made to ensure the accuracy of the floorplans contained here, measurements of doors, windows, rooms and any other items are approximate and no responsibility is taken for any error, omission or mis-statement. This plan is for illustrative purposes only and should be used as such by any prospective purchaser. The services, systems and appliances shown have not been tested and no guarantee as to their operability or efficiency can be given.
Made with Metrepro ©2020

